

**Lotus.** software

**IBM**

Lotus Connector for SAP R/3  
with MTA and Workflow



## Installation Guide

## **Disclaimer**

THIS DOCUMENTATION IS PROVIDED FOR REFERENCE PURPOSES ONLY. WHILE EFFORTS WERE MADE TO VERIFY THE COMPLETENESS AND ACCURACY OF THE INFORMATION CONTAINED IN THIS DOCUMENTATION, THIS DOCUMENTATION IS PROVIDED "AS IS" WITHOUT ANY WARRANTY WHATSOEVER AND TO THE MAXIMUM EXTENT PERMITTED, LOTUS AND IBM DISCLAIM ALL IMPLIED WARRANTIES, INCLUDING WITHOUT LIMITATION THE IMPLIED WARRANTIES OF MERCHANTABILITY, NONINFRINGEMENT AND FITNESS FOR A PARTICULAR PURPOSE, WITH RESPECT TO THE SAME. LOTUS AND IBM SHALL NOT BE RESPONSIBLE FOR ANY DAMAGES, INCLUDING WITHOUT LIMITATION, DIRECT, INDIRECT, CONSEQUENTIAL OR INCIDENTAL DAMAGES, ARISING OUT OF THE USE OF, OR OTHERWISE RELATED TO, THIS DOCUMENTATION OR ANY OTHER DOCUMENTATION. NOTWITHSTANDING ANYTHING TO THE CONTRARY, NOTHING CONTAINED IN THIS DOCUMENTATION OR ANY OTHER DOCUMENTATION IS INTENDED TO, NOR SHALL HAVE THE EFFECT OF, CREATING ANY WARRANTIES OR REPRESENTATIONS FROM LOTUS AND IBM (OR THEIR SUPPLIERS OR LICENSORS), OR ALTERING THE TERMS AND CONDITIONS OF THE APPLICABLE LICENSE AGREEMENT GOVERNING THE USE OF THIS SOFTWARE.

## **Copyright**

Under the copyright laws, neither the documentation nor the software may be copied, photocopied, reproduced, translated, or reduced to any electronic medium or machine-readable form, in whole or in part, without the prior written consent of IBM Corporation, except in the manner described in the documentation or the applicable licensing agreement governing the use of the software.

© Copyright 1985 - 2002 Lotus Development Corporation

© Copyright IBM Corporation

Lotus Software, IBM Software Group  
One Rogers Street  
Cambridge, MA 02142

All Rights Reserved.

## **List of Trademarks**

Domino, cc:Mail, Notes, NotesBench, Domino Connectors, Domino Enterprise Connection Services, IBM Lotus Enterprise Integrator for Domino (LEI), and Notes/FX are trademarks; and Freelance, Freelance Graphics, Lotus, Lotus Notes, LotusScript, Notes Mail, NotesSQL, NotesView, 1-2-3, Organizer, SmartIcons, and SmartSuite are registered trademarks of Lotus Development Corporation and/or IBM Corporation in the United States, other countries, or both. OS/2 Warp and PowerPC are trademarks and IBM, AIX, DB2, OS390, iSeries, zSeries, pSeries, OS/2 Presentation Manager, and SNA are registered trademarks, and DB2/2, DB2/400, and RS/6000 are trademarks of International Business Machines Corporation. Tivoli/Courier is a trademark of Tivoli Systems and/or IBM Corporation in the United States, other countries, or both.

All other trademarks are the property of their respective owners.

---

# Contents

<b>Preface</b> .....	v
<b>Installing and Uninstalling Instructions for the Lotus Connector for SAP Version 1.7</b> .....	1
Introduction to the Installation Process .....	1
Supported Platforms and Configurations .....	2
Preparing to Install on UNIX .....	3
Installing the Lotus Connector for SAP on the Win 32 and UNIX Platforms .....	4
Installing the Lotus Connector for SAP on the iSeries Platform .....	10
Uninstalling the Lotus Connector for SAP .....	16



---

## Preface

The Lotus Connector for SAP R/3 is a premium Lotus Connector designed to be used with IBM Lotus Enterprise Integrator for Domino (LEI), Domino Enterprise Connection Services DECS), Lotus Connector LotusScript Extensions (LC LSX), Lotus Enterprise Solution Builder for Domino (ESB), and IBM's WebSphere products.

The Lotus Connector for SAP R/3 can optionally be used in conjunction with the Domino MTA for R/3 and/or Domino Access to SAP Business Workflow adjunct products.

This document describes how to install and uninstall the Lotus Connector for SAP R/3 Release 1.7.

### Related Documentation

This section lists documentation that you may find useful as you learn about and use the Lotus Connector for SAP R/3.

#### SAP-related Documentation

The related documentation for this product set is listed below.

**Note** The Lotus Connector for SAP is available as a premium connector to IBM Lotus Enterprise Integrator for Domino (LEI) and Domino Connection Services (DECS).

- *Domino Access to SAP Business Workflow Installation and User Guide* (wfhelphelp.nsf) — Provides information and instruction for installing and configuring Domino Access to SAP Business Workflow in a Domino environment.
- *Domino MTA for R/3 Installation and User Guide* (mtahelp.nsf) — Provides information and instruction for installing and configuring Domino MTA for R/3.
- *Lotus Connector for SAP R/3 Installation Guide* (sapconin.nsf and sapconin.pdf) — Provides instruction and concepts needed to install the current release of Lotus Connector for SAP R/3.
- *Lotus Connector for SAP R/3 User Guide* (sapdoc.nsf) — Provides information and instructions for configuring and using the Lotus Connector for SAP R/3 with LEI, DECS, and/or the LC LSX in either the Domino 5 or Domino 6 environment.

- The readme.txt file contains helpful information about the current release of the Lotus Connector for SAP R/3 with MTA and Workflow.

General information about Lotus Connectors and connectivity can be found in the *Lotus Connectors and Connectivity Guide* (lcon6.nsf or lcon.nsf) installed with Domino and also available at <http://www.lotus.com/ldd> in .nsf and .pdf format.

Related information about the Lotus Connectors LotusScript Extensions (LC LSX) can be found in the *Lotus Connector LotusScript Extensions Guide* (lsxlc6.nsf or lsxlc.nsf) installed with Domino and also available at <http://www.lotus.com/ldd> in .nsf and .pdf format.

### **LEI Documentation**

Online documentation for LEI is available with the product distribution and at <http://www.lotus.com/ldd>. The LEI documentation set is listed below:

- *IBM Lotus Enterprise Integrator for Domino (LEI) Activities and User Guide* — Provides information and instructions for using LEI and its activities (leidoc.nsf and leidoc.pdf). This document is supplied with your LEI version and is also available for viewing and download at <http://www.lotus.com/ldd>.
- *IBM Lotus Enterprise Integrator for Domino (LEI) Installation Guide* — Provides installation, configuration, and migration instructions for LEI (leiig.nsf and leiig.pdf). This document is supplied with your LEI version and is also available for viewing and download at <http://www.lotus.com/ldd>.
- *Lotus Connectors and Connectivity Guide* — Provides information on how to set up and use the supplied Lotus Connectors, including information about required software and instructions for testing connectivity (lcon6.nsf). This Release 6 version documentation file is installed with Domino, not with LEI. The lcon6.pdf file is available for download at <http://www.lotus.com/ldd>. The LEI Release 3.2 and pre-Domino 6 version is lcon.nsf and is also available at the same LDD location.
- *Lotus Connector LotusScript Extensions Guide* — Describes the Lotus Connector LotusScript Extensions, which can be used in writing scripted sessions for accessing enterprise data (lsxlc6.nsf). This documentation file is installed with Domino, not with LEI. The lsxlc6.pdf file is available for download at <http://www.lotus.com/ldd>. The LEI Release 3.2 and pre-Domino 6 version is lsxlc.nsf and is also available at the same LDD location.
- *IBM Lotus Enterprise Integrator for Domino (LEI) Release Notes* — The LEI release notes (readme.txt) contain information about the current release of LEI that may not be included in the documentation set.

Current information about LEI can be found at <http://www.lotus.com/ei>.

## DECS Documentation

Online documentation for DECS is available with the product distribution and at <http://www.lotus.com/ldd>. It is comprised of three separate manuals as follows:

- *Domino Enterprise Connection Services Installation and User Guide* — Provides information and instructions for using DECS with Domino 6 (decsd6.nsf). The DECS on Domino Release 5 version is decsd5.nsf. Both versions are supplied with Domino and are also available for viewing and download at <http://www.lotus.com/ldd>.
- *Lotus Connectors and Connectivity Guide* — Provides information on how to set up and use the supplied Lotus Connectors, including information about required software and instructions for testing connectivity (lcon6.nsf). This documentation file is installed with Domino, not with LEI. The lcon6.pdf file is available for download at <http://www.lotus.com/ldd>. The DECS on Domino Release 5 version is lcon5.nsf and is also available at the same LDD location.
- *Lotus Connector LotusScript Extensions Guide* — Describes the Lotus Connector LotusScript Extensions, which can be used in writing scripted sessions for accessing enterprise data (lsxl6.nsf). This documentation file is installed with Domino, not with LEI. The lsxl6.pdf file is available for download at <http://www.lotus.com/ldd>. The DECS on Domino Release 5 version is lsxl5.nsf and is also available at the same LDD location.
- *Domino Enterprise Connection Services (DECS) Release Notes* — The release notes contain information about the current release of DECS that may not be included in the documentation set.

Current information about DECS can be found at <http://www.lotus.com/ei>.

## Other Documentation

For more information about related tools, refer to the following documents:

- *Domino Administrator's Guide* — This manual provides information for configuring and administering a Notes installation.
- *LotusScript Language Reference* — This manual provides information about writing LotusScript programs. This could be useful if you want to use the Domino LotusScript Extensions (LSX) to write custom Activities.

- *Additional Lotus Connector Documentation* — Lotus Software, IBM Software Group sells additional Lotus Connectors for enterprise systems including Enterprise Resource Planning (ERP) and Transaction Processing Systems. Specific documentation about those Connectors is included with the specific Connector software and package. You may need documentation for the specific databases, ERP, or transaction processing systems that you are using.

## **Contact and Support Information**

Lotus Software, IBM Software Group provides extensive support for its products.

### **Enterprise Integrator Web Site**

To obtain the latest information about LEI and DECS, visit the following Web site:

<http://www.lotus.com/ei>

**Note** Domino-related product updates for iSeries can be found at following Web site:

<http://www-1.ibm.com/servers/eserver/iseries/domino/support/qmu.htm>

### **Technical Support**

To contact Customer Support with suggestions or questions regarding your Lotus Connector or LEI/DECS application, visit Lotus Support Services at the following Web site:

<http://www-3.ibm.com/software/lotus/support/>

---

# Installing and Uninstalling Instructions for the Lotus Connector for SAP Version 1.7

---

## Introduction to the Installation Process

This document describes how to install and uninstall your Lotus Connector for SAP R/3. It is the companion document to the *Lotus Connector for SAP R/3 User Guide* supplied with your Lotus Connector for SAP.

### Installation Considerations

- The Installer requires that Notes, Domino, DECS, LEI, and/or ESB have already been installed.  
**Note** This Connector is available for Domino 6 and LEI Release 6.0. It is also available for Domino Release 5.0.10 and LEI Release 3.2.
- If you are running LEI against a remote Domino server, the Domino server must be running prior to installing this Connector.
- The Installer uses a temp directory as part of the installation process. If you have set a temp directory using an environment variable, be sure that the specified temp directory exists. If the specified temp directory does not exist, the Installer will abort the Connector installation procedure. The drive on which the temp directory exists must have at least 10MB of free disk space.
- The Lotus Connector for SAP R/3 is supplied either on CD-ROM or as a download from the IBM Lotus Web site as a self-extracting file containing documentation, the product readme.txt, and the install executable.
- See the Enterprise Integration Web site for current information <http://www.lotus.com/ei>.

For third party client library installation instructions, see the *Lotus Connector for SAP R/3 User Guide* .

---

## Supported Platforms and Configurations

This section lists supported platforms, requirements, and configurations.

**Note** For Domino Release 5 and LEI Release 3.2, the LEI Administrator, LEI server, DECS, and the Lotus Connector for SAP R/3 do not support multiple members of a Domino partitioned server. When configuring a partitioned Domino server, the LEI Administrator database and the LEI server can be installed and configured on a single member of the partition.

**Note** If you are using the LEI Advanced RealTime activities (Virtual Documents, Virtual Fields, and Virtual Agents), ensure that not more than one member of the partition loads the LEI server addin task and that the same partition member has the LEI extension manager library entry in its notes.ini file. The Lotus Connector for SAP R/3 should be installed to the same (first listed) partition server noted in the notes.ini and (for LEI Release 3.2) the lei.ini file. There is no lei.ini file in LEI Release 6.

### Supported Operating Systems

The Lotus Connector for SAP R/3 is supported on the following platforms.

- Windows NT 4.0 with SP 6a
- Windows 2000
- Windows XP
- Windows 98
- AIX 4.3.3 and 5.1
- Solaris Sparc 2.8
- OS/400 V5R1M0 for iSeries

### Software Requirements

The Lotus Connector for SAP R/3 Version 1.7 is available for use with both Domino 6 and Release 5.0.10. The Connector requires the following:

- Notes 6 client with Domino 6 server  
In this configuration, the LEI Release 6 product stream is supported. The LC LSX and DECS versions that ship with Domino 6 are also supported. This configuration uses Lotus .dcx Connector files.
- Notes R5 client with Domino R5 server  
In this configuration, the LEI Release 3.x product stream is supported. The LC LSX and DECS versions that ships with R5 are also supported. This configuration uses Lotus .lcx Connector files.

- If using the Connector in conjunction with LEI, client libraries of the external systems to be accessed (SAP R/3 and any connection types that you want to transfer to and from) must be installed on the LEI server and the Domino server. When running activities, if the LEI server that you want the activity to run on and the Domino server where the LEI Administrator resides are on separate machines (or you are using Domino Release 5), the client libraries must be installed on both machines. See your LEI documentation for details.

**Note** If you wish to use LEI Release 6 in conjunction with this 1.7 version of the Lotus Connector for SAP, you must also use Domino 6. If you wish to use LEI Release 3.2 in conjunction with this 1.7 version of the Lotus Connector for SAP R/3, you must also use Domino Release 5.0.10. See your LEI user documentation for details.

### Supported SAP R/3 Versions

The Lotus Connector for SAP R/3 version 1.7 supports SAP R/3 3.1I and greater.

**Note** The optional MTA product supports SAP R/3 3.1I and later.

**Note** The optional Workflow product supports SAP R/3 4.0A and later.

---

## Preparing to Install on UNIX

Before you install your Connector, you must perform the following tasks.

1. Log onto the UNIX machine using the account that will use the Connector. Ensure that the environment variables that are normally defined at runtime are defined. For example, the `Notes_ExecDirectory` environment variable must be defined for a Domino environment.
2. Use the UNIX `su` command to gain root privilege. This is an example of the Korn shell syntax you would use:

```
su
password: XXXXX
```

3. If running a remote connection to the UNIX machine, ensure the `DISPLAY` environment variable contains the TCP/IP address of the machine where the X Windows shell will be displayed. Example Korn shell syntax is shown below:

```
export DISPLAY=128.128.128.128:0.0
```

You are now ready to begin the installation procedure.

---

## Installing the Lotus Connector for SAP on the Win 32 and UNIX Platforms

The Lotus Connector for SAP installation program for Windows is supplied as an executable file, setup.exe or setup. The installation program uses dialog boxes to guide you through the installation process.

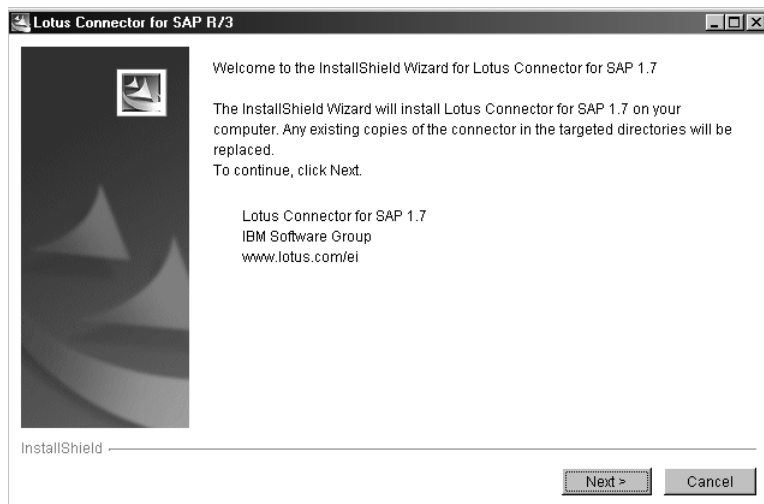
**Note** If you are running LEI using a remote Domino server, ensure that the Domino server is running before you begin the Lotus Connector for SAP installation process.

The Connector is supplied either on CD-ROM or as download from the IBM Lotus Web site as a self-extracting .exe file containing documentation, the readme.txt, and the install executable.

Installation instructions specific to Win32, AIX, and Solaris platforms are described below.

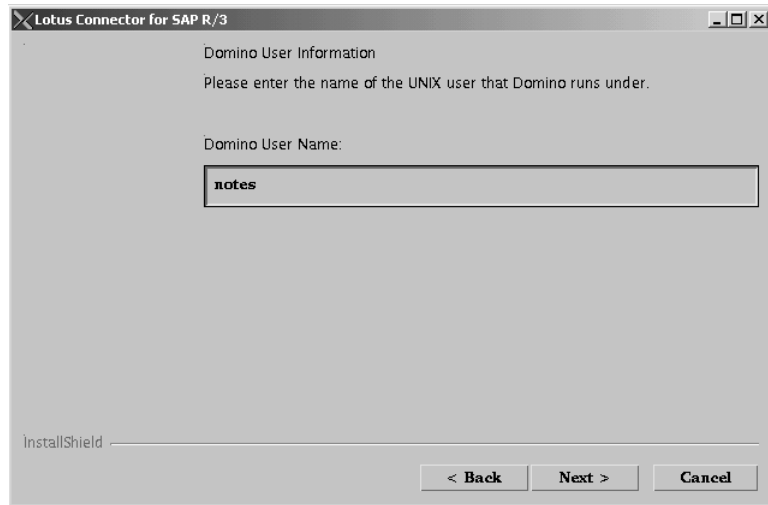
**Note** Also see the readme.txt file for required operating system and software versions. This information can also be found in your *Lotus Connector for SAP User Guide*.

1. Open a Windows Explorer window or UNIX shell and locate the install executable (setup.exe, setupAIX, or setupSparc) supplied with your Lotus Connector for SAP.
2. Invoke the appropriate setup executable to initiate the installation utility.
3. A welcome screen appears. To proceed, click Next.

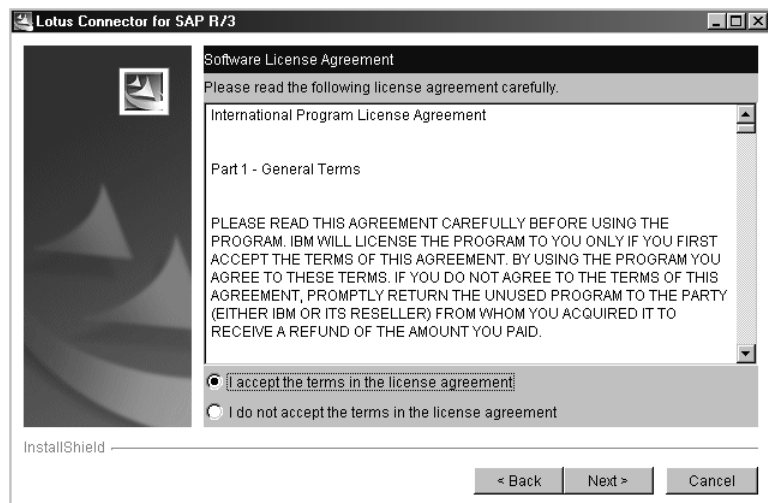


## 4 Lotus Connector for SAP R/3 with MTA and Workflow Installation Guide

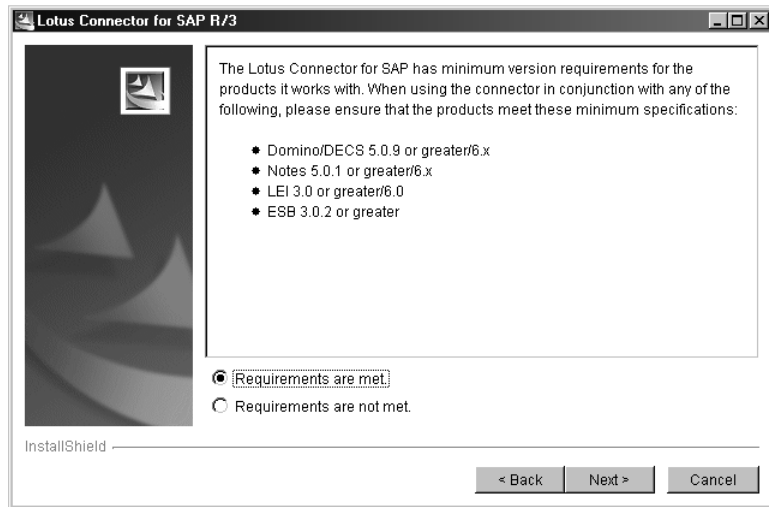
4. If you are installing to a UNIX machine, the following screen appears, prompting for the Domino name of the UNIX user. Enter that name and click Next to continue.



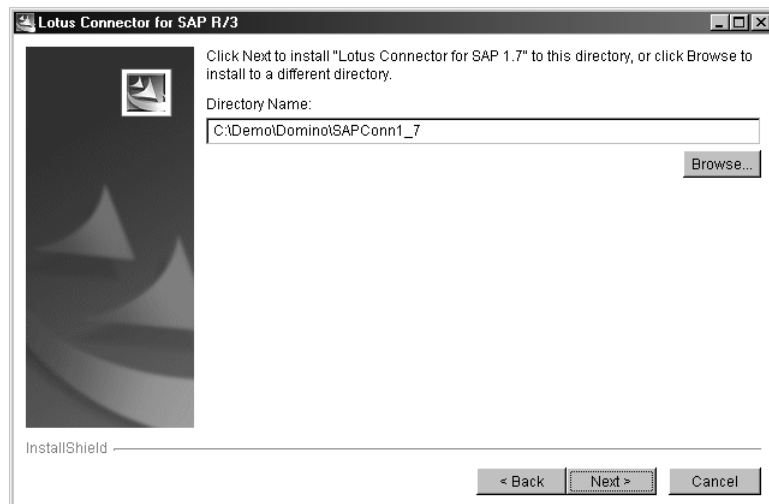
5. The License Agreement conditions appear. You must either accept or decline the agreement. If you choose not to accept the agreement, installation ends here. To accept and proceed, click the "I accept the terms in the license agreement" option and then click Next.



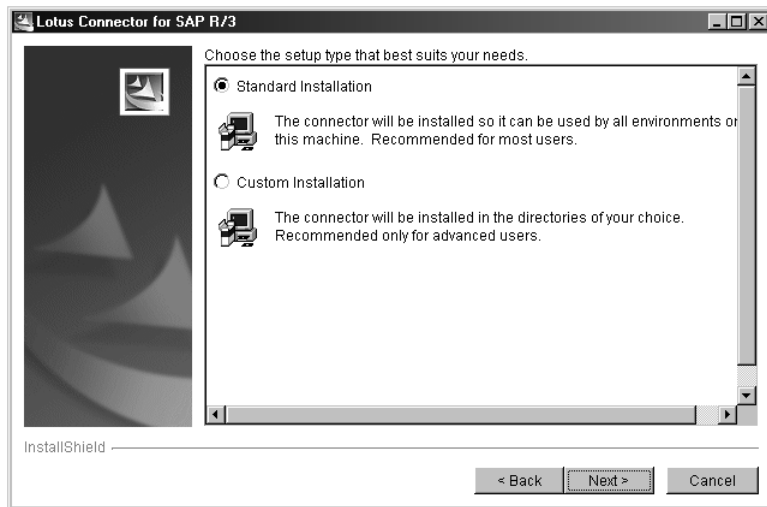
6. A version requirements screen appears. If your system meets the minimum requirements, click the “Requirements are met” option and then click Next to proceed.



7. A dialog box appears specifying which directory the Connector will be installed into. Accept the default or specify a different location in which to install the Connector. When you are ready to proceed, click Next.

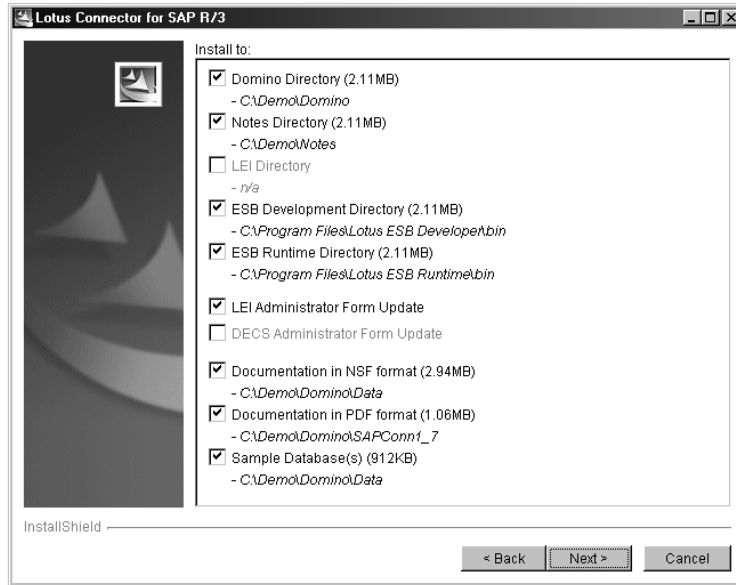


8. A Standard or Custom Installation choice screen appears, enabling you to specify an installation method. Select either Standard Installation or Custom Installation and click Next to proceed.



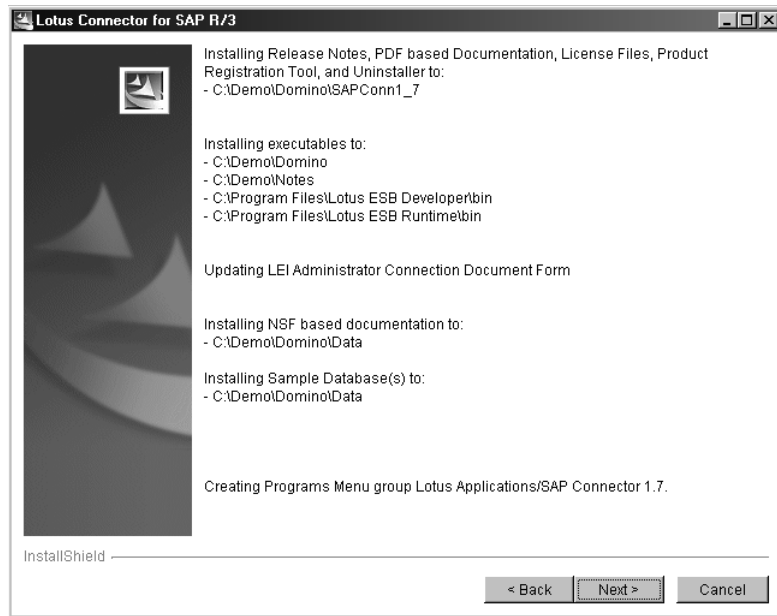
**Note** If you are a new or infrequent user, choose the Standard Installation method. You should have an excellent working knowledge of your system configuration and operating system if using the Custom Installation method.

9. If you selected Custom, a dialog box appears containing selected features based on what the installer has discovered about your system. Specify which directory to install into or accept the defaults. When you are ready to proceed, click Next.



10. If you had selected Custom Installation, in response to the previous screen, the utility now displays where it will install the items that you just specified. Click Next to continue. Alternately, click Back to respecify install items.

**Note** You cannot change the directories/folders where the executables or the documentation are installed.



11. The installer installs the software and informs you when it has completed installation.

**Note** If an error occurs during installation, the installer generates a log file in the install directory.

12. Upon successful installation, a product registration screen appears. Complete the form now and click Next to proceed or click Exit and complete product registration at a later time.

**Note** The Product Registration Tool (PRT) requires Netscape to be available on the UNIX machine where the installer is running. In case the installer cannot launch Netscape, you can manually open the PRT by launching any Internet browser and providing the name of the HTML document containing the link to the IBM product registration site.

For an AIX or Solaris installation, the PRT HTML document is installed in the /opt/lotus/SAPConn/prt directory.

You can change to the correct directory and then launch the PRT in Netscape using the following command:

```
netscape PRT_Welcome.html
```

13. Complete any additional product registration forms that may appear and click Next to continue.

14. The installer displays a successful completion screen. Click Finish to exit the program.

Depending on your configuration, you may need to reboot your machine after install. You will be notified if it is necessary for you to reboot.

---

## Installing the Lotus Connector for SAP on the iSeries Platform

The Lotus Connector for SAP installation program for Windows is supplied as an executable file, setup. The installation program uses dialog boxes to guide you through the installation process.

**Note** If you are running LEI using a remote Domino server, ensure that the Domino server is running before you begin the Lotus Connector for SAP installation process.

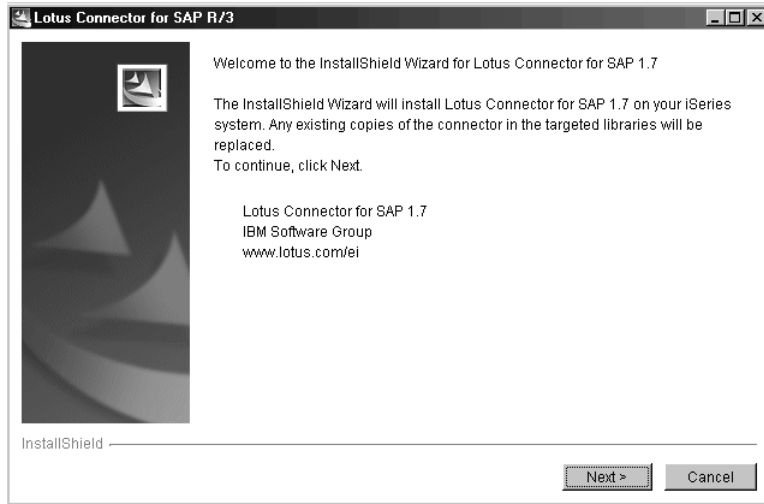
The Connector is supplied either on CD-ROM or as download from the IBM Lotus Web site as a self-extracting .exe file containing documentation, the readme.txt, and the install executable.

Installation instructions specific to iSeries are described below.

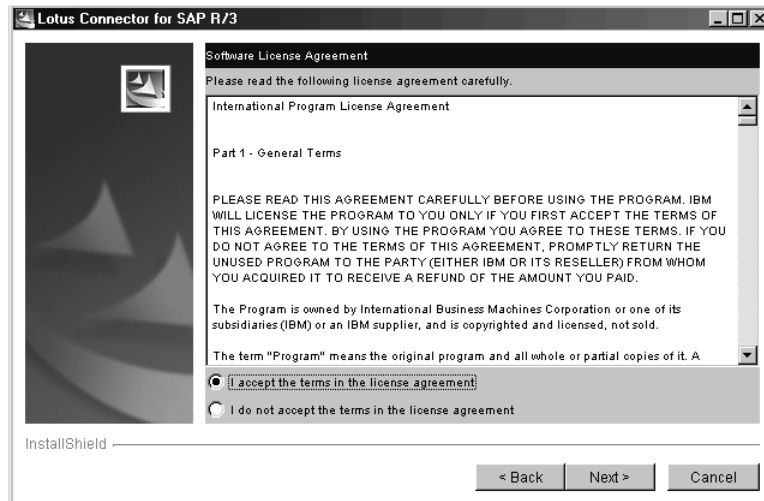
**Note** Also see the readme.txt file for required operating system and software versions. This information can also be found in your *Lotus Connector for SAP User Guide*.

1. On your iSeries workstation, navigate to the install executable (setup) supplied with your Lotus Connector for SAP.
2. Invoke the install executable to initiate the installation utility.

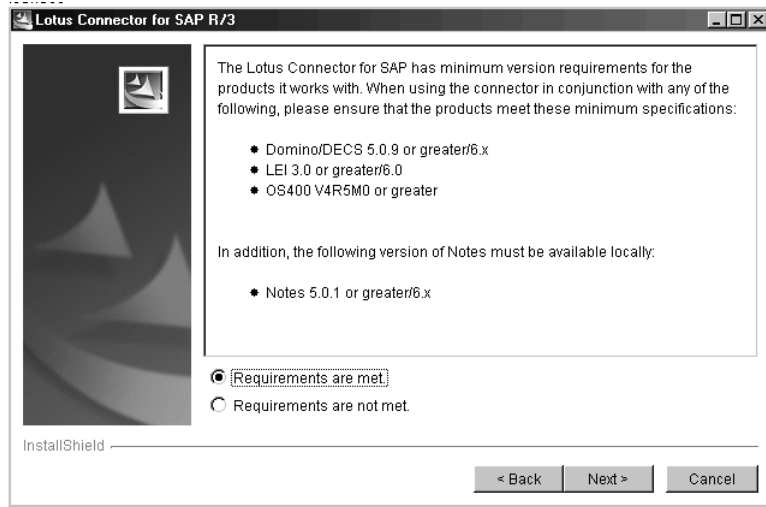
3. A welcome screen appears. To proceed, click Next.



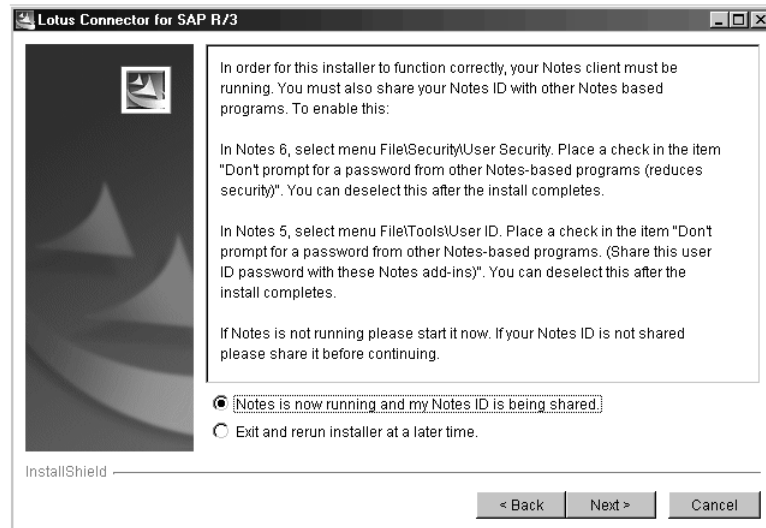
4. The License Agreement conditions appear. You must either accept or decline the agreement. If you choose not to accept the agreement, installation ends here. To accept and proceed, click the "I accept the terms in the license agreement" option and then click Next.



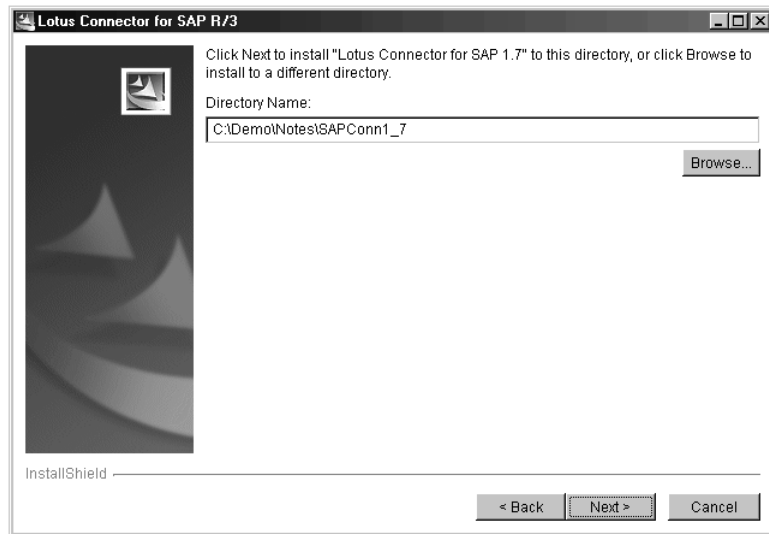
5. A version requirements screen appears. If your system meets the minimum requirements, click the “Requirements are met” option and then click Next to proceed.



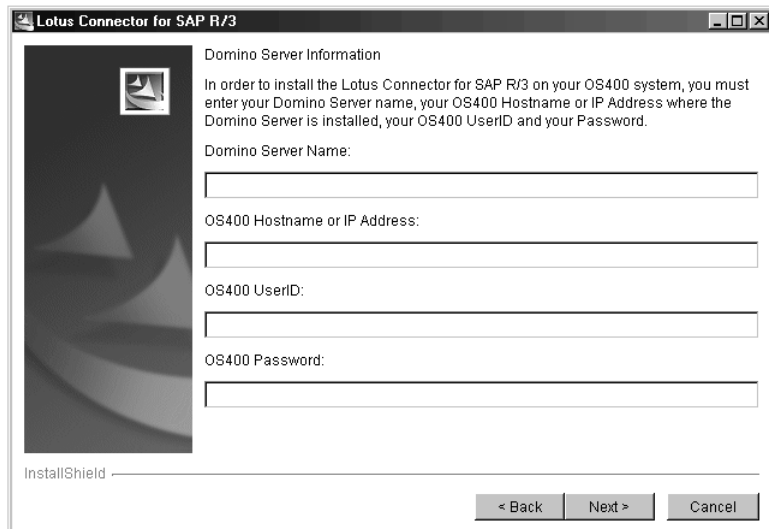
6. A screen stating that your Notes client must be running and your Notes ID must be shared appears. Read it thoroughly. If you meet the requirements, click the “Notes is now running and my Notes ID is being shared” and click Next to continue. If not, exit the installation utility, perform the tasks needed to meet the requirements, and restart installation.



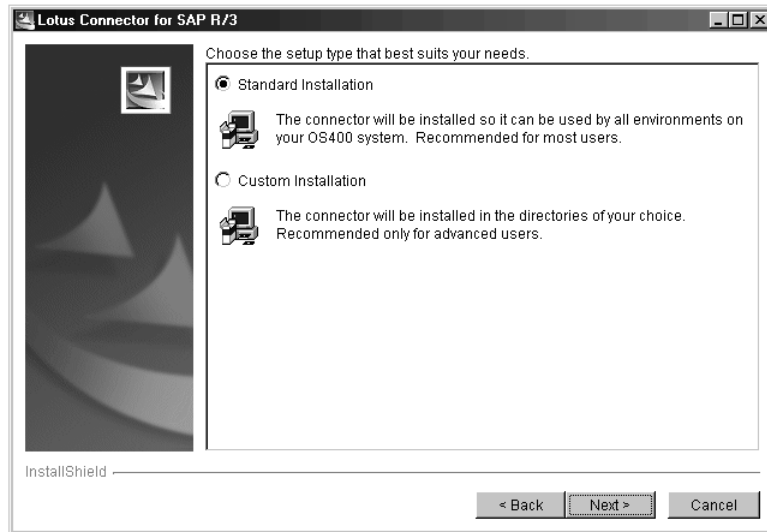
7. A dialog box appears specifying which directory the Connector will be installed into. Accept the default or specify a different location in which to install the Connector. When you are ready to proceed, click Next.



8. On the Domino server information screen, enter the Domino server name and the iSeries host name or IP address, iSeries user ID, and password and then click Next to continue.

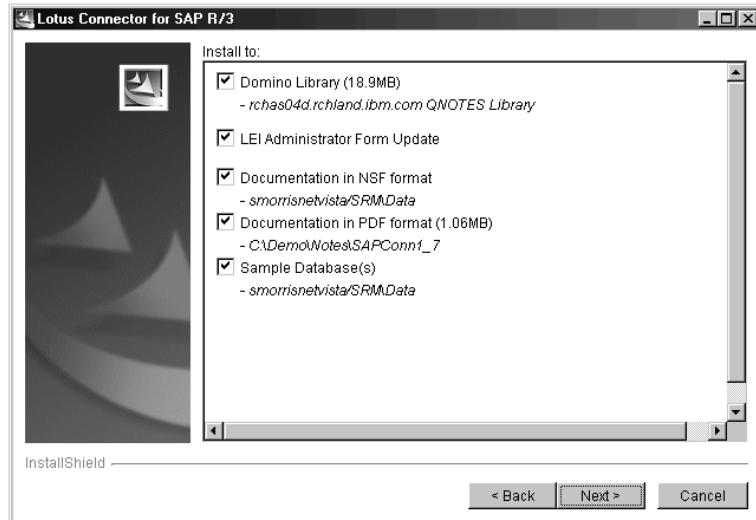


9. A Standard or Custom Installation choice screen appears, enabling you to specify an installation method. Select either Standard Installation or Custom Installation and click Next to proceed.



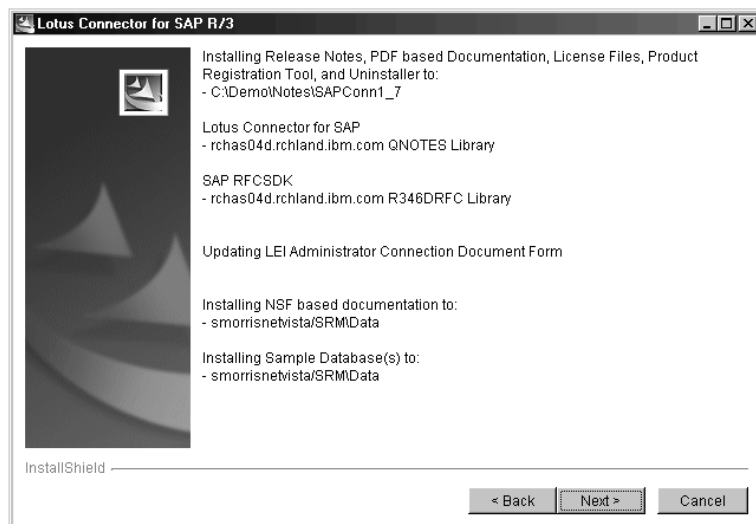
**Note** If you are a new or infrequent user, choose the Standard Installation method. You should have an excellent working knowledge of your system configuration and operating system if using the Custom Installation method.

10. If you selected Custom, a dialog box appears containing selected features based on what the installer has discovered about your system. Specify which directory to install into or accept the defaults. When you are ready to proceed, click Next.



11. If you had selected Custom Installation, in response to the previous screen, the utility now displays where it will install the items that you just specified. Click Next to continue. Alternately, click Back to respecify install items.

**Note** You cannot change the directories where the executables or the documentation are installed.



12. The installer installs the software and informs you when it has completed installation.  
**Note** If an error occurs during installation, the installer generates a log file in the install directory.
13. Upon successful installation, a product registration screen appears. Complete the form now and click Next to proceed or click Exit and complete product registration at a later time.  
**Note** The Product Registration Tool (PRT) requires Netscape to be available on the UNIX machine where the installer is running. In case the installer cannot launch Netscape, you can manually open the PRT by launching any Internet browser and providing the name of the HTML document containing the link to the IBM product registration site.  
For an AIX or Solaris installation, the PRT HTML document is installed in the /opt/lotus/SAPConn/prt directory.  
You can change to the correct directory and then launch the PRT in Netscape using the following command:  

```
netscape PRT_Welcome.html
```
14. Complete any additional product registration forms that may appear and click Next to continue.
15. The installer displays a successful completion screen. Click Finish to exit the program.  
Depending on your configuration, you may need to reboot your machine after install. You will be notified if it is necessary for you to reboot.

---

## Uninstalling the Lotus Connector for SAP

The Lotus Connector for SAP uninstall utility preserves all existing SAP Connection Documents. It does not remove them.

If an error occurs during uninstall, the utility may not delete the \_jvm directory. If this occurs, you can manually delete the \_jvm directory.

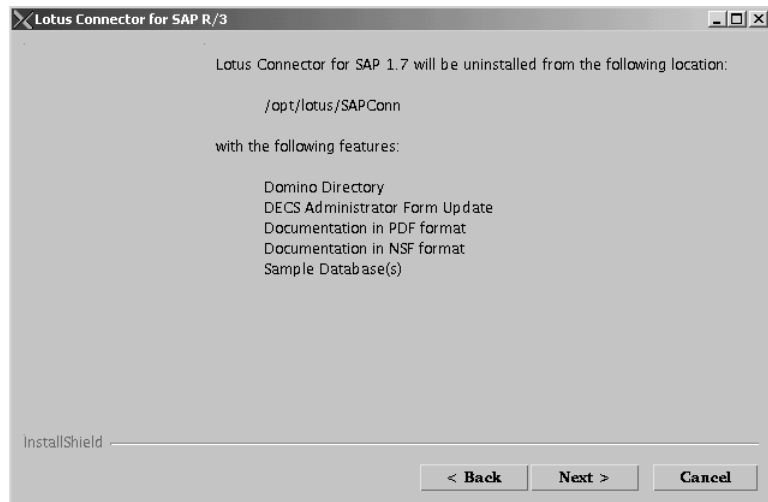
To uninstall the Connector documentation, sample files, and the uninstaller, complete the following steps, depending upon which platform the Connector resides on.

## Uninstall the Connector from Windows

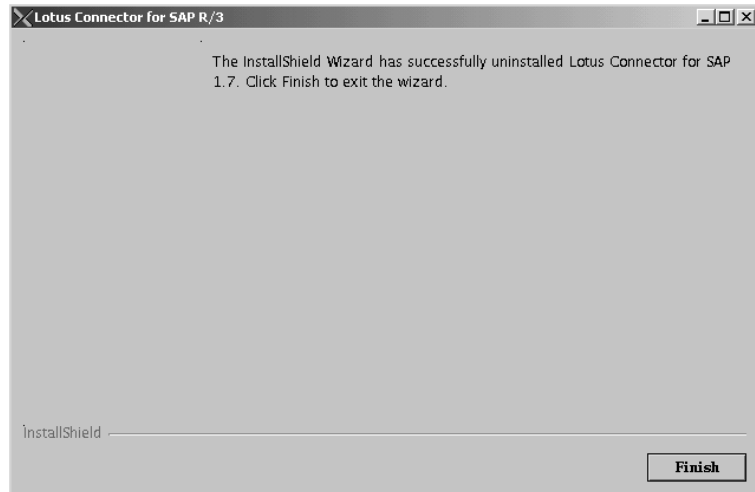
1. Select the Programs - Lotus Applications - SAP Connector - Uninstaller menu sequence from the Start menu. The Welcome screen appears. Click Next to continue.



2. The next screen indicates what will be uninstalled and from what location the items will be uninstalled. Click Next to continue. A sample screen is shown below.



3. When the Connector uninstall is complete, the following screen appears. Click Finish to exit.



## Uninstall the Connector from UNIX

1. For UNIX users, perform the following four command line steps to initiate uninstall.

```
cd /opt/lotus/SAPConn/_uninst
```

```
su to root
```

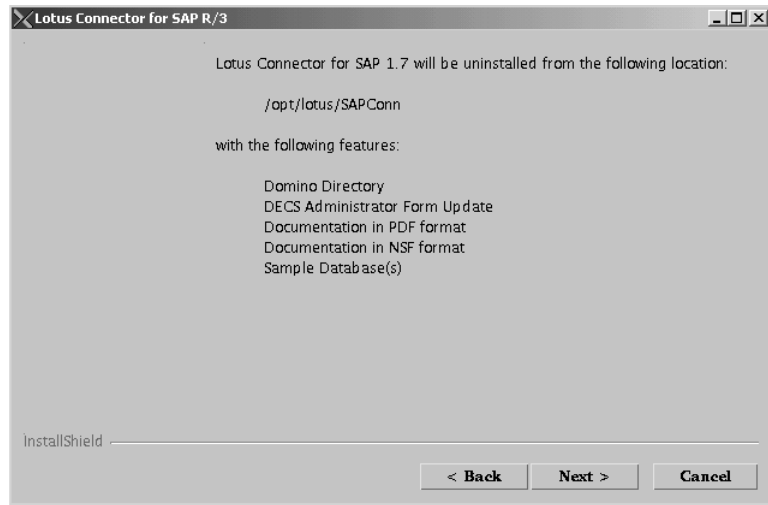
```
export DISPLAY=9.22.44.61
```

```
./uninstall
```

The Welcome screen appears. Click Next to continue.



2. The next screen indicates what will be uninstalled and from what location the items will be uninstalled. Click Next to continue. A sample screen is shown below. Review the information and then click Next to continue.



3. When the Connector uninstall is complete, the following screen appears. Click Finish to exit.

